



CEDAR SINAI PARK

love. honor. respect.

GENERATION TO GENERATION

GENERATION TO GENERATION | דור לדור

A Cedar Sinai Park Quarterly

Portland | Oregon

Spring 2013 | 5773

Vol. 17 | No. 2

TUGGING ON HEARTSTRINGS

ROBISON STAFF OPEN
DOORS TO THE WORLD

AFFORDABLE HOUSING GETS A
BOOST

**RESIDENT
POETRY**

**NEWS
UPDATES**

KEHILLAH HOUSING CONSTRUCTION COMMENCES

MESSAGE FROM THE PRESIDENT

BY PAUL FRISCH, PRESIDENT, BOARD OF TRUSTEES

THIS IS THE time for action. We've been planning and working for years to move forward with the development of our new nursing facility. We are delighted to now be entering the community phase of fundraising work in order to build the New Nursing Home based on the



household model. We are honored that a number of community leaders and 100% of our Board of Directors have made commitments and that we now have close to \$6,000,000 raised for this new home. We need your help to make this dream a reality.

HOUSEHOLD MODEL

The New Nursing Home will consist of four households. Each household will have 12 individual private bedrooms with their own bathroom and shower. Residents stepping out of their bedrooms will be entering the heart of their home. A beautiful living room, a comfortable dining area, and a state-of-the-art kitchen will be the central features of each household. In addition, a library space for those seeking quiet contemplation and a spa for those wishing to be pampered just a little bit will also be included among the enjoyable amenities. And of course, like any other household, utility spaces like a laundry room will be easy to access and well maintained.

Most importantly, these new households will provide members of our community who may need

memory support or on-going care with a setting that has been shown to make a difference in terms of well-being and quality of life. All of us have been raised and live in homes. In our homes, we are surrounded by familiar objects and spaces that help us to maintain our orientation and to feel comfortable. By designing our healthcare space in accordance with this normal environment, we will be able to provide settings that are truly home to members of our community who deserve every comfort and reassurance we can provide. Additionally, these more intimate living and care settings will provide a safer and more comforting place to live.

ROBISON RENOVATION

The Robison Jewish Health Center, which has served our community well for more than half a century, will continue to be an important asset to our organization. We will be renovating key systems and updating our interior spaces to assure that anyone served in that building will also enjoy a private room. Robison will be the key facility for the short-term rehabilitation work that we provide to many of our community members who just need a little bit of help after a hospital stay prior to going home. In addition, our Adult Day Service Program and some resi-

dential care will remain inside the Robison building. A bridge linking the New Nursing Home with the Robison Jewish Health Center will

The results of our capital campaign will make a significant difference in the quality of life that we want to provide our community's elders.

make it possible for all of our long-term residents to be able to come together for parties and religious services.

GIVE GENEROUSLY

As you can see, the results of our capital campaign will make a significant difference in the quality of life that we want to provide our community's elders. We need your direct involvement and your generous participation to make this campaign a success. Volunteers of our organization will be making contact with you. We hope that you will join us and give generously. •

A handwritten signature in blue ink that reads "Paul Frisch". The signature is fluid and cursive, with a small mark above the 'i' in "Frisch".

IN THIS ISSUE

EDITORIALS	2-3
WHAT'S NEW	4-8
POEMS BY ROSE SCHNITZER MANOR RESIDENTS	9
TUGGING ON HEARTSTRINGS	10-11
The annual benefit raises much-needed funds	
OUR FAMILY PHOTO ALBUM	13-15
KEHILLAH HOUSING CONSTRUCTION BEGINS	17
AMERICAN TAX PAYER RELIEF ACT AND YOU	19
ROBISON STAFF OPENS DOORS TO THE WORLD	20
Cultural Diversity Week enlightens, delights	
HELP US BE A GOOD NEIGHBOR	20
IN A NUTSHELL	23
Who we are, what we do, and why	
CEDAR SINAI PARK ONLINE	24

On the cover: *Elise Brickner-Schulz raises her hand at the March 2 Heartstrings event while being recognized as a Board member. Photo by Justin Tunis.*

FROM THE CEO'S DESK

BY DAVID FUKS, CHIEF EXECUTIVE OFFICER, CEDAR SINAI PARK

AS WE GET older, we face a number of challenges and some of us feel frustrated as we are asked to consider limited options. Cedar Sinai Park is working to break through



those limitations and make sure that our community has many opportunities to live well.

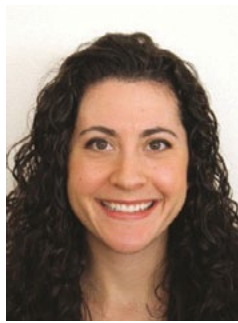
As you well know, we are moving forward with a capital campaign that will provide a remarkable quality of life for our most fragile community members. We are also renovating the Robison Jewish Health Center in order to extend the highest quality of rehabilitation and day services to our community. We are thrilled to be moving forward with those efforts. In addition, we are also pleased to be moving forward in many other directions. The Rose Schnitzer Manor continues to provide the highest quality of assisted living in our state. By providing this quality of service, we have been and will continue to be able to allow elders to remain independent for a much longer period of time. Our Adult Day Center continues to assure families who are providing care for loved ones at home that they will have opportunities for respite or work while their loved one is part of a happy and active community. Sinai Family Home Services continues to grow and is helping more and more in our community to remain

in their own homes as they face health challenges. The creation of Kehillah Housing (see p. 17), which will provide for young developmentally disabled adults, will also provide options and choices for family members seeking to help their adult children to make an important transition into independence. Finally, our affordable housing apartment buildings in downtown Portland, when linked with health and social services that we will be coordinating on-site for, will provide lower-income members of our community new options that will help them to thrive (see pp. 6-7).

At the center of this spectrum of services is a strong commitment to individual choice and the dignity of our community members. Cedar Sinai Park is not just the home; it is the organization in our community committed to developing a Jewish response to the issues of aging and disability. Our growth and diversification will help us to remain strong throughout the 21st century. Our work is informed by the faith and values of our community. Our desire to grow and create more choices for community members reflects our commitment to keep faith with this community's values. •

WHAT'S NEW AT CEDAR SINAI PARK

NEW ROBISON ADMINISTRATOR



Robison Jewish Health Center witnessed a not-so-solemn ceremony on Friday, January 23, 2013: the certificate affirming Lesley Sacks as the new administrator was placed on the notice board in an act dubbed 'The Changing of the Paper.' The ceremony completed 8 months of Lesley's transition into her new role (see the Fall 2012 issue of *Generation to Generation*).

A Portland native, Lesley has been with Cedar Sinai Park since 2005: she served as Admissions Coordinator/Social Services Co-Director and previously as the Director of Adult Day Services.

Lesley said, "I'm excited about the opportunity to serve our elders and grow within the organization. I have a strong affinity for this community and a special connection to Robison because many of my family members lived here, including my grandpa, great uncles and great aunts."

Outlining her vision, Lesley said she wants to ensure Robison continues to enjoy strong leadership, particularly as Cedar Sinai Park moves to a new phase of its development. Short-term, she wants to make the transition smooth for residents, family members, and staff. ●

MANOR RESIDENTS WIN CREATIVE WRITING CONTEST

Every year since 1993, LeadingAge Oregon has held a Creative Writing Contest. Cedar Sinai Park residents have participated in great

numbers. Winners were announced on February 28; 50 winning pieces were also published in *Reflections: A Collection of Writing and Poetry by Oregon's Elders*.

We have received notification that the following entries by RSM residents were selected as winners:

- "Uncle Izzy" by Sam Berry
- "Friday, December 14, 2012" by Florence Blitch
- "Waiting" by Diane Budner
- "A Mother" by Alice Cahana
- "Haunted" by Evelyn Hirsch
- "Mother Tulip's Chant" by Martha M. Pomeranz
- "Sonnet" by Robert Putterman

Read some of the winning entries throughout this issue of *Generation to Generation*. ●

IMPLEMENTING ELECTRONIC MEDICAL RECORDS

The implementation of the Health MEDX electronic medical records system is well under way and succeeding. Staff at the Robison facility are now routinely using this system. Rose Schnitzer Manor implementation has begun. We anticipate additional expenditures related to hardware expenses and system management.

The leap to electronic medical records will make a significant difference in both quality of service and management of key systems. ●



Chief Program Officer and former Robison Jewish Health Center Administrator Kimberly Fuson (right) and the new Administrator Lesley Sacks affix the nursing home administrator certificate on the Robison notice board.

Continued on pages 6 to 8



The Goodman Family
is a proud supporter
of Cedar Sinai Park

**AFFORDABLE HOUSING PURCHASES
COMPLETED**

The purchase of the Park Tower and Lexington Apartments properties concluded on Dec. 19, 2012. We are now managing 540 apartments (in four downtown buildings) for low-income elders and people with disabilities. The purchase will allow us to continue contributing to the

well-being of our city and to generate resources for fulfilling our mission.

We could not have done this without the tireless work and leadership of Jim Winkler; generosity of Harold, Arlene, and Jordan Schnitzer; staff support from Harsch Investment; our HUD Section 8 Operating Committee (Paul Frisch, Michael Feves, Jack Menashe, Paul Labby

and Conrad Myers); efforts of Bill Stinnett and Lisa Tillman; and stewardship of consultants and partner organizations.

The renovation of these acquisitions is currently underway, with construction in these two buildings (and The 1200 Building, purchased earlier in 2012) coordinated with moving tenants in and out of apartments. ●



Ruben J. Menashe, Inc.
BUILDER • DEVELOPER

***Congratulations* to the dedicated staff of Cedar Sinai Park.**

Your commitment and hard work is what makes it
Oregon's premier Elder Care Community!



COMING SOON to NE Mason and N Williams, another new development by Ruben and Jack Menashe.

11359 NE Halsey Street, Portland, Oregon 97220, 503-255-9680 | www.rjmenasheinc.com



Affordable housing (clockwise from top left): Rose Schnitzer Tower (2007), Lexington Apartments, The 1200 Building, Park Tower Apartments (all 2012)

Real Care. In Real Time.



Today's modern care environment requires a pharmacy partner who is there for you all the time - and in real time.

Omnicare delivers.

When someone's in pain or has a critical medication need, time is of the essence. Omnicare helps expedite care delivery through real-time innovations like OmniviewDr, our e-prescribing technology for controlled substances, including C-lls. Within minutes, prescriber orders are sent to the pharmacy, ensuring meds are delivered timely to those in need.

To learn more about how our comprehensive solutions, including e-prescribing, deliver real results to your business, visit www.omnicare.com/realtime for downloads and video.

Evergreen Pharmaceutical, LLC

Brian Egan, General Manager brian.egan@omnicare.com 503-262-1126



888-545-OMNI
results@omnicare.com
omnicare.com

©2013 Omnicare

HOUSING WITH SERVICES PROGRESSES

As we round out the affordable housing portfolio, we are developing the services to be provided in the four buildings. We received a grant from the Weinberg Foundation to refurbish a commercial space in The 1200 Building to create a healthcare and social services area. ●

ROBISON RESIDENCE FLAWLESS

The Robison Residential Care Facility completed its biennial state survey with zero citations.

Our gratitude goes to the RCF staff lead by Health Services Director Dorcas Kish, Assistant Administrator Lesley Sacks, and Chief Program Officer Kimberly Fuson.

Reacting to the announcement, Dorcas said, "Thank you all for the congratulations and support. I have worked here for 25 years and have seen the growth and the community support that makes us successful in providing loving care. Thank you for making Cedar Park a great place to work." ●

*Thank you for making
Cedar Sinai Park a
great place to work.*

—Dorcas Kish

I have said this elsewhere but I will say it again: on behalf of the family of Sheila Cohen Springer, thank you to the wonderful staff at Cedar Sinai Park at all levels but especially the Miriam Suite caregivers led by Ronnie Schecter.

From the first day at Rose Schnitzer Manor to the last night at Robison, mom and our family were treated with compassion, professionalism and respect. Thank you all.

—Bill Cohen

POEMS BY ROSE SCHNITZER MANOR RESIDENTS

“FRIDAY, DECEMBER 14, 2012: SANDY
HOOK ELEMENTARY SCHOOL”
BY FLORENCE BLITCH

I write down words, then take them away.
I can find none that will convey
The awful horror of today...

Their young laughter, song,
Stilled suddenly, was no more...
Teachers crumpled to the floor
All, all tomorrows gone.

A boundless rage born of our sorrow
Roars out across the land.
Keening, we bend to comprehend
Evil beyond evil. We cannot understand.

Forever now a shadow lies across our lives,
A tie that binds our agony.
Knot well this ribbon of our grief;
Hold them forever close in memory.

SONNET
BY ROBERT S. PUTTERMAN

We often thirst for what is first in life,
What is that precious thing that we
must know.
Because our days are often filled
with strife,
It's hard to find the purpose for this show.

Perhaps, we've thought, the answer
is in wealth,
Although we know that that has
ne'er been true,
And then the subject of our constant health
Has always been there, out there in
the blue.
Since neither meet the test with
errless grace

The answer lies in something else for sure.
The only truth that stares us in the face
Comes quickly through like spar-
kling crystal pure.

It's loving friendship that we find
comes “first”
To answer what we know is life's
main thirst. •



Proud to Partner with and Support
CEDAR SINAI PARK

RH
R&H CONSTRUCTION

www.rhconst.com

503.228.7177

OR CCB #: 38304

TUGGING ON HEARTSTRINGS

THIS YEAR'S BENEFIT for the residents of Robison Jewish Health Center again brought our community together in one place to show support for our elders. On March 2 at the Governor Hotel, Heartstrings inspired all with positive energy, laughter, and kindness.

The Havdalah service, led by Cantor Ida Rae Cahana and accompanied on guitar by Beth Hamon, launched the event on a high note. The ensuing cocktail hour made the room sing with lively conversations as friends reconnected and new acquaintances were made.

Together with the event's generous sponsors (see ads in this issue), generous guests rose up as a community during the Mitzvah Moment paddle raise to enrich the lives of our most honored citizens. What an encouraging experience to see so many people commit time and dollars to uphold the values of love, honor, and respect that we at Cedar Sinai

Park hold so dear. Our community's generosity will help nurture bodies, souls, hearts and minds of Robison residents. On their behalf, we are deeply grateful for the support.

The introduction of the capital campaign to build the new nursing home on our campus (see the Fall 2012 issue of *Generation to Generation*) provided



Irwin and Renee Holzman between Les and Martha Soltesz



Co-chairs Leslie J. Geller (left) and Jane Vereschagin with Richard Geller

a bridge to the delicious dinner. The evening crescendoed with the performance by the renowned Portland Cello Project.

A huge 'Thank you!' goes to the Heartstrings Co-Chairs Leslie Geller and Jane Vereschagin. We're also grateful to the Cedar Sinai Park Development Committee, staff, and volunteers for their hard work putting *Heartstrings* together. A special thanks goes to David Kohnstamm for donating his art to the silent auction.

You can relive the magic of *Heartstrings* by visiting the photo gallery at bit.ly/13HZWbj (Justin Tunis was the event photographer). We also invite you to watch (and share with your friends) the capital campaign video at youtube.com/cedarsinaipark.

See you again at our next event! ●

Clockwise from top left: Heartstrings signature graphic by Jen McClure; Havdalah with Cantor Ida Rae Cahana and Beth Hamon; Marci Koontz with resident Hilda Tunick; DeAnn Sullivan raises her number during Mitzvah Moment; preparing for Havdalah; Gideon Freudmann performing with the Portland Cello Project; President Paul Frisch and CEO David Fuks; Development Committee Chair Michelle Eastern Gradow with husband and fellow Board member Steve Gradow.



Steinberg Investment Group

Lance Steinberg, President
1 SW Columbia, Ste. 1650
Portland, OR 97258

503-488-2020 or 888-829-6299

Fax: 503-488-2007

www.steinberginvestmentgroup.com

Medline is proud
to support
Cedar Sinai Park



Our mission is to provide quality medical products with superior value to healthcare providers and end users, improving patient and resident care and the quality of peoples' lives.

800.633.5463 | www.medline.com

MILLENNIUM

GRAPHICS, PRINT, PROMOTIONAL & APPAREL

Complete design, print and direct marketing solutions from start to finish

We can handle all of your Business' printing needs! Brochures, Clothing, Promotional... we can put your name on just about anything.

503.649.0168 • Fax 503.591.0623

earl@millennium-graphics.com • liz@millennium-graphics.com

and we are honored to work with and help support



CEDAR SINAI PARK

love. honor. respect.

503.649.0168

OUR FAMILY PHOTO ALBUM



Clockwise from top: Robison residents Mimi Silver, Ruth Bressler, and Grace Klor hanging out with the llama; RJHC resident Martha Yoder making a watercolor; Manor resident and playwright Evelyn Hirsch in her creative space.



Clockwise from top left: Recipients of the 2013 Villa Scholarship with benefactors Jeff & Francine Reingold; Paul Schlesinger chatting with CEO David Fuks and Federation President Marc Blattner at the Kehillah Housing ground-breaking; Manor resident Robert Putterman at a birthday party with Life Enrichment Coordinator Elizabeth Moore; George Fendel provides musical context to RSM Administrator David Kohnstamm's live painting; residents Howard and Frances Wolfe.



Clockwise from top left: Robison resident Mimi Silver at the Portland Art Museum; Robison Jewish Health Center resident Estelle Moses with some of our culinary and nursing staff; art show at RSM; Hy Freedman and Culinary Services Director Uri Kushner perform at the Robison Talent Show; English as a Second Language class graduation with resident volunteer Arnie Silver and instructor Carolyn Caldwell (center in red skirt); RSM resident Lenore Weston with her family at Yad B'Yad (see Fall 2012 issue).



*We thank all the angels
that support
Cedar Sinai Park.*



*Tonkon Torp is proud to
support Cedar Sinai Park
and the work it does for
seniors in our community.*



tonkon.com
503.221.1440

HOLMAN'S FUNERAL SERVICE



***Providing Caring, Affordable
Service to Portland's Jewish
Community Since 1854***

503-232-5131

2610 S.E. Hawthorne Blvd. • Portland, OR 97214
www.HolmansFuneralService.com

*Best wishes to Cedar
Sinai Park residents,
staff and volunteers.*

Diane & David
Rosencrantz



KEHILLAH HOUSING CONSTRUCTION BEGINS

WE ARE DELIGHTED to have started building Kehillah Housing, a 2-story, 14-apartment building for adults with special needs. The groundbreaking ceremony on September 28 last year celebrated the contributions of many supporters to the project, including the Department

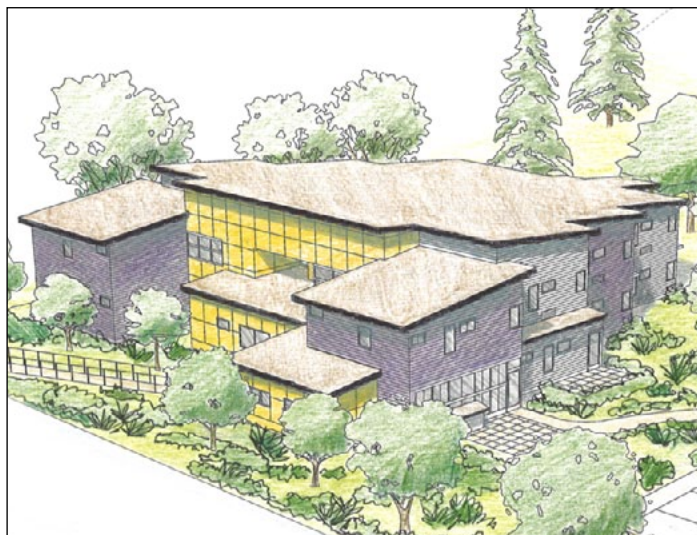
of Housing and Urban Development, Portland Housing Bureau, Oregon Housing & Community Services, National Council of Jewish Women, Wayne D. Kuni and Joan E. Kuni Foundation, Jerry & Helen Stern and the Stern Family, as well as many other individual donors.

R&H Construction started building the project a few days later. The site was winterized in December and construction resumed in March. Kehillah Housing is slated to be completed in summer 2013.

According to CEO David Fuks, "We are pleased to be helping to cre-

ate a new resource to meet the needs of developmentally disabled adults and their families." •

Left from top: Breaking ground, 9/28/12; the construction site from the Robison building, in October 2012 and early March 2013; rendering of the completed project (NW elevation) courtesy of Bruce Sternberg Architect, Inc.





CAROLYN
and ROBIN
WEINSTEIN



דור לדור

Realtors® for Every Generation

*Working for you and our
community since 1978*

TO LEARN MORE VISIT

cweinsteinpdxhomes.com

OR CONTACT US PERSONALLY

CAROLYN 503.802.6415 ROBIN 503.802.6405

carolynandrobin@hasson.com



America's Leading Supplier of Janitorial, Cleaning and MRO Products

Promoting a Cleaner and Healthier Environment

In addition to being the largest national janitorial products distributor, AmSan also has introduced a complete FMS (Facility, Maintenance, & Supplies) Catalog. From green seal certified janitorial solutions to Carpet & Rug Institute certified cleaning equipment to Energy Star certified electrical appliances and lamps. We deliver a complete Green Product Solution.

*All of us at AmSan are proud
to be partners with
Cedar Sinai Park Facilities.*

WWW.AMSAN.COM

866-412-6726..Fax 877-712-6726



BRUCE STERNBERG
ARCHITECT, INC.

PROUD TO BE THE ARCHITECTS
OF KEHILLAH HOUSING

SPIRITED
PRACTICAL
COST EFFECTIVE



Architecture o Planning o Interior Design

503-774-5005 email:sternarc@comcast.net website:realarc.com

**U.S. Bank.
Community,
country and you.**

U.S. Bank has been a pillar of the Portland communities for more than 120 years. We are proud of our heritage, trust and relationships we have built through the generations...making dreams come true. Our commitment means supporting the programs and organizations that enrich the quality of life for all of our neighbors. Because when our community succeeds, everyone wins.

**U.S. Bank is honored to partner with Cedar Sinai Park — from “Generation to Generation”
...the future looks brighter with us!**

All of **us** serving you®



usbank.com

Member FDIC. ©2012 U.S. Bancorp. All rights reserved.

6134

AMERICAN TAXPAYER RELIEF ACT AND YOU

BY ROY ABRAMOWITZ, CPA, CFP, TREASURER OF THE OREGON JEWISH COMMUNITY FOUNDATION

ON JANUARY 2ND, 2013 President Obama signed into law the American Taxpayer Relief Act of 2012 (ATRA). While we averted the 'fiscal cliff' at the time, ATRA gave us something unexpected: permanency and an end to 'sunsetting' tax provisions. But as we know from our

particular brand of sausage-making, nothing lasts forever.

ATRA retained and made permanent all of the Bush-era income tax rates and brackets, indexed for inflation. A new top tax rate of 39.6% was added for wealthy individuals with over \$400,000 and couples over \$450,000 of taxable income, allowing certain itemized deductions.

The existing 15% tax rate (lower for low-income taxpayers) was made permanent for long-term capital gains and qualified dividends. However, starting in 2013, the rate increases to 20% for high-income individuals and couples.

Do not overlook the impact of the 3.8% Medicare Surtax which also starts in 2013. This new tax, first introduced by the Affordable Health Care Act in 2010, applies to all investment-related income including interest, dividends, capital gains, and rental income but not earned income, retirement or social security income. The surtax kicks in at lower levels: wealthy individuals and couples with adjusted gross incomes above \$200,000 and \$250,000, respectively.

For example, if you have AGI of \$500,000 consisting mostly of rental and dividend income, your top federal income tax rate would be 43.4% and capital gains rate would be 23.8%.

While ATRA did not cap itemized deductions, it re-imposed gradual phase-outs of itemized deductions and personal exemptions from before 2010. The phase-outs apply to yet another category of wealthy taxpayers: individuals and couples with AGI over \$250,000 and \$300,000, respectively. It's hard to keep track of who is wealthy anymore!

The Act patched the alternative minimum tax (AMT) permanently and indexed it for inflation. Otherwise the AMT would have negatively impacted millions of taxpayers in 2012.

ATRA also made permanent at \$5,000,000, as indexed for inflation, the lifetime exemption for estates including gift and generation-skipping transfers, and increased the top estate tax rate from 35% to 40%. While most individuals never have to be concerned with the federal estate tax, the lifetime

exemption is only \$1,000,000 in Oregon so the state estate tax is likely to apply to many decedents.

The most notable charitable provision in the Act renewed the charitable IRA rollover but only for 2013 and 2012 under limited circumstances. The provision allows people older than 70½ to direct retirement distributions up to \$100,000 to eligible charities. No charitable deduction is allowed since the income is tax-free. •

Hello.
I'm Jen McClure

I create
Illustration & Design

Let's Chat! 503.459.6364
feffmclure@yahoo.com
Check out my work:
behance.net/jenmclure
jenmclure.tumblr.com

ROBISON STAFF OPEN DOORS TO THE WORLD

THE LIFE ENRICHMENT team at the Robison Jewish Health Center spearheaded the first Cultural Diversity Week during the week of February 11–15. Many employees from around the world shared their culture through dress, talks, song, dance, and food.

Residents sampled Chinese food in celebration of the Year of the Snake. They took a Spanish lesson with Benito Lopez Romero and an arm-chair trip to Thailand and Vietnam with Katy Chappell and her husband Dave. The Ethiopian coffee ceremony and Françoise Kasongo's stories and songs from the Congo transported residents to Sub-Saharan Africa. Other countries represented with programs were the Ukraine, Guatemala, Nigeria, and India.

"It was wonderful to get to know the people we see every day a little bit better," said Life Enrichment Coordinator Jennifer Felberg.

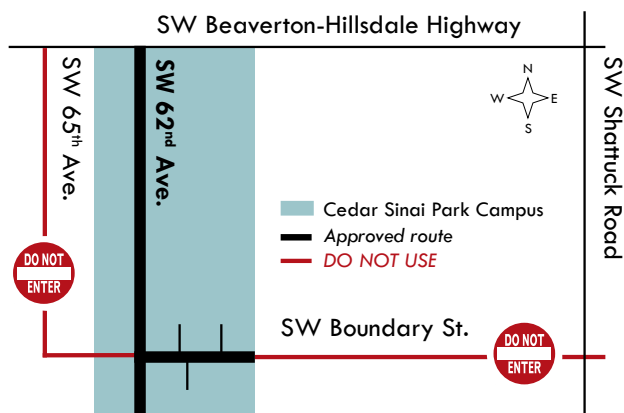
Throughout the week the notice board by the dining room featured a map where many employees placed a pin in the place of their birth. Robison staff represent at least 26 countries outside of the United States! •

CNA's Françoise Kasongo and Macqueen Sam perform songs from their native Congo.



HELP US BE A GOOD NEIGHBOR

ONLY USE SW 62ND AVENUE TO ACCESS OUR CAMPUS.



HANSEN HUNTER & CO. P.C.
Certified Public Accountants

Hansen, Hunter & Company, P.C., is a full-service CPA firm specializing in serving the acute and post-acute health care industry in more than 35 states.

Reimbursement Services

- **Medi-Cal** cost reporting and consulting with profit/loss analysis, rate-setting, audit representation and settlement analysis.
- **Medicare** cost reporting and consulting with profit/loss analysis by RUG category and by resident considering fixed versus variable costs.

Clinical Consulting Services

- Clinical audits with in-house RNs knowledgeable in Medicare, Medicaid case-mix and price-based systems
- Billing audits
- Compliance consulting (including IRO function of CIAs)
- Quality Indicator consulting in preparation for Survey

Audit Services

- For-profit and not-for-profit nursing homes, assisted living facilities and CCRC's
- HUD audits
- OMB A-133 audits
- Fraud audits
- 401(k) and 403 (b) audits
- Residential housing audits

Tax Services

We provide all types of tax preparation, planning, and consulting.

Please contact us at (800) 547-3159 for more information.

Carla Properties, Ltd.,
is proud to support
the mission of
Cedar Sinai Park



Best wishes to the
residents and staff at
Cedar Sinai Park.

Landgraphics, Inc.
Commercial
Landscaping Services



The definition of...
heartstrings—*your deepest feelings of*
love and compassion;
love—*a strong positive emotion of*
regard and affection;
compassion—*a deep awareness of and*
sympathy for another's suffering.

With eternal gratitude to the
wonderful Executive Council and
Staff of Cedar Sinai Park, who
demonstrate love and compassion
every day.

In memory of Marian Davidson



GeffenMesher

Visit gmco.com to learn more.



Visit cedarsinaipark.org for the latest news about Cedar Sinai Park and our residents.

We are pleased to support the commitment of Cedar Sinai Park to love, honor and respect.



Bateman Seidel Miner Blomgren Chellis & Gram, P.C.



Miller Nash and Cedar Sinai board member, Elise Brickner-Schulz, are proud to support the 2013 Heartstrings event and the Robison Jewish Health Center.



PORTLAND CENTRAL OREGON SEATTLE VANCOUVER

In appreciation of Cedar Sinai Park.

Tom & Alix Goodman



CEDAR SINAI PARK IN A NUTSHELL

CEDAR SINAI PARK provides residential and community-based care to our elders and adults with special needs, allowing them to live with comfort, independence, and dignity in a manner and in an environment based on Jewish values. A person-centered approach to care

is at the heart of our mission. In everything we do, we recognize that people, including our eldest and most frail citizens, have the right to control decisions made about their lives.

A nonprofit organization, we're committed to delivering a broad-based continuum of person-centered care that can be tailored to every individual's unique needs.

Our family of services ensures that we're with you wherever you or your loved one choose to live.

- **ROSE SCHNITZER MANOR:**
Independent and assisted living
- **ROBISON JEWISH HEALTH CENTER:**
Skilled, intermediate, and memory care
- **ROBISON RESIDENCE:**
Residential care (see p. 8)
- **ADULT DAY SERVICES:**
Daily respite care
- **AFFORDABLE HOUSING:**
Four buildings for seniors and people with disabilities (see p. 6)
- **KEHILLAH HOUSING:**
Affordable housing for adults with special needs (see p. 17)
- **SINAI FAMILY HOME SERVICES:**
In-home care (joint venture with JFCS) •

Supported by
Jewish Federation
OF GREATER PORTLAND



CORRECTIONS – FALL 2012 ISSUE

Page 3: The caption for the cover photo misidentified Alison Garfinkle and her daughter Maddie as the daughter and granddaughter of resident Annette Gerard. They are, respectively, Annette's granddaughter and great-granddaughter.

Page 7: Carol Blau Rothstein is manager not of Portland Jewish Library but PJ Library.

Page 21, 2nd column: The names of Howard and Jane Krichevski were omitted from the tribute to Susan Kaplon.

Page 23, 3rd column: "Lora Schlesinger" should read "Norton Schlesinger".

Page 24, 3rd column: "Marvin Rosumny" should read "Celia Rosumny".

We regret the errors.

GENERATION TO GENERATION VOL. 17, NO. 2 (SPRING 2013)

PUBLISHER
Cedar Sinai Park
6125 SW Boundary St.
Portland, OR 97221-1019
www.cedarsinaiark.org

MANAGING EDITOR
Debbi Bodie

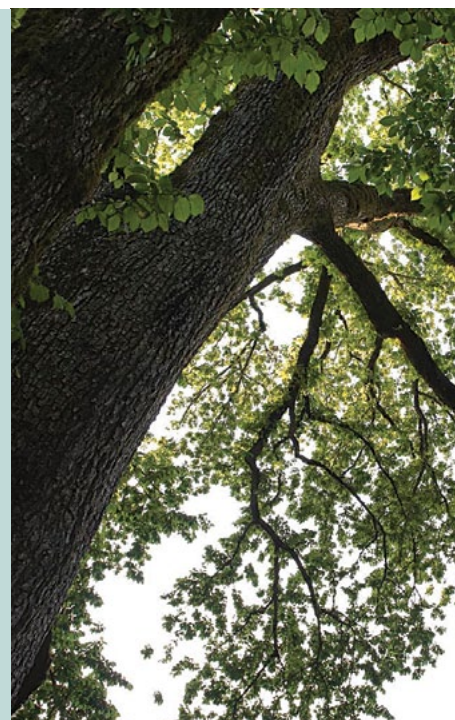
CONTRIBUTING WRITER AND DESIGNER
Peter Korchnak

ADDITIONAL CONTENT
David Fuks

COPY EDITOR
DeAnn Sullivan Fuks

PHOTOGRAPHY (EXCEPT PP. 10-11)
Peter Korchnak, Life Enrichment Coordinators, Kimberly Fuson

ADDITIONAL ASSISTANCE
Teri Patapoff, Barbara Taylor





CEDAR SINAI PARK
love. honor. respect.

6125 SW Boundary Street
Portland, OR 97221-1019

NON-PROFIT ORG
U.S. POSTAGE
PAID
PORTLAND, OR
PERMIT NO. 733

CONTINUE READING ONLINE

IN PRINT, GENERATION TO GENERATION offers only a selection of stories, photos, quotes, and other information. Visit our outposts on the Internet to further explore life at Cedar Sinai Park. Read, watch, comment, Like—let us know what you think. We'd love to hear from you.



WEBSITE

Hot off the design and coding presses, our newly redesigned website www.CedarSinaiPark.org contains everything about our organization, including facilities, services, educational content, as well as this and past issues of *Generation to Generation*. With a couple of clicks, you can donate to benefit our residents. Sub-

scribe to the blog via email or RSS to be the first to know the latest news from around the campus and beyond.



FLICKR

Most of the photos from around Cedar Sinai Park are on Flickr.com, a photo site, where we organized them into sets by date and event for easy viewing.



FACEBOOK

Like our page at [facebook.com/CedarSinaiPark](https://www.facebook.com/CedarSinaiPark) to see the latest updates in your feed.



YOUTUBE

Visit our YouTube channel for our, yes, videos.

Enjoy and please let us know how we are doing! •